

INFORMATION WITHIN THIS DRAWING IS NOT NECESSARILY PRODUCED TO SCALE.
ALWAYS USE FIGURED DIMENSIONS AND CO-ORDINATES - IF IN DOUBT, ASK.

This sketch drawing is a record of drainage ditches noted on a site walkover in March 2016.

KEY

- Site boundary
- - - Drainage ditch (continuous)
- . - . - Drainage ditch (intermittent)

A	First Issue.			
REV	DESCRIPTION	SIG	CHK	DATE

**WAKEFIELD METROPOLITAN
BOROUGH COUNCIL**

**LAND OFF MILTON CRESCENT,
LUPSET**

DRAINAGE DITCH PLAN

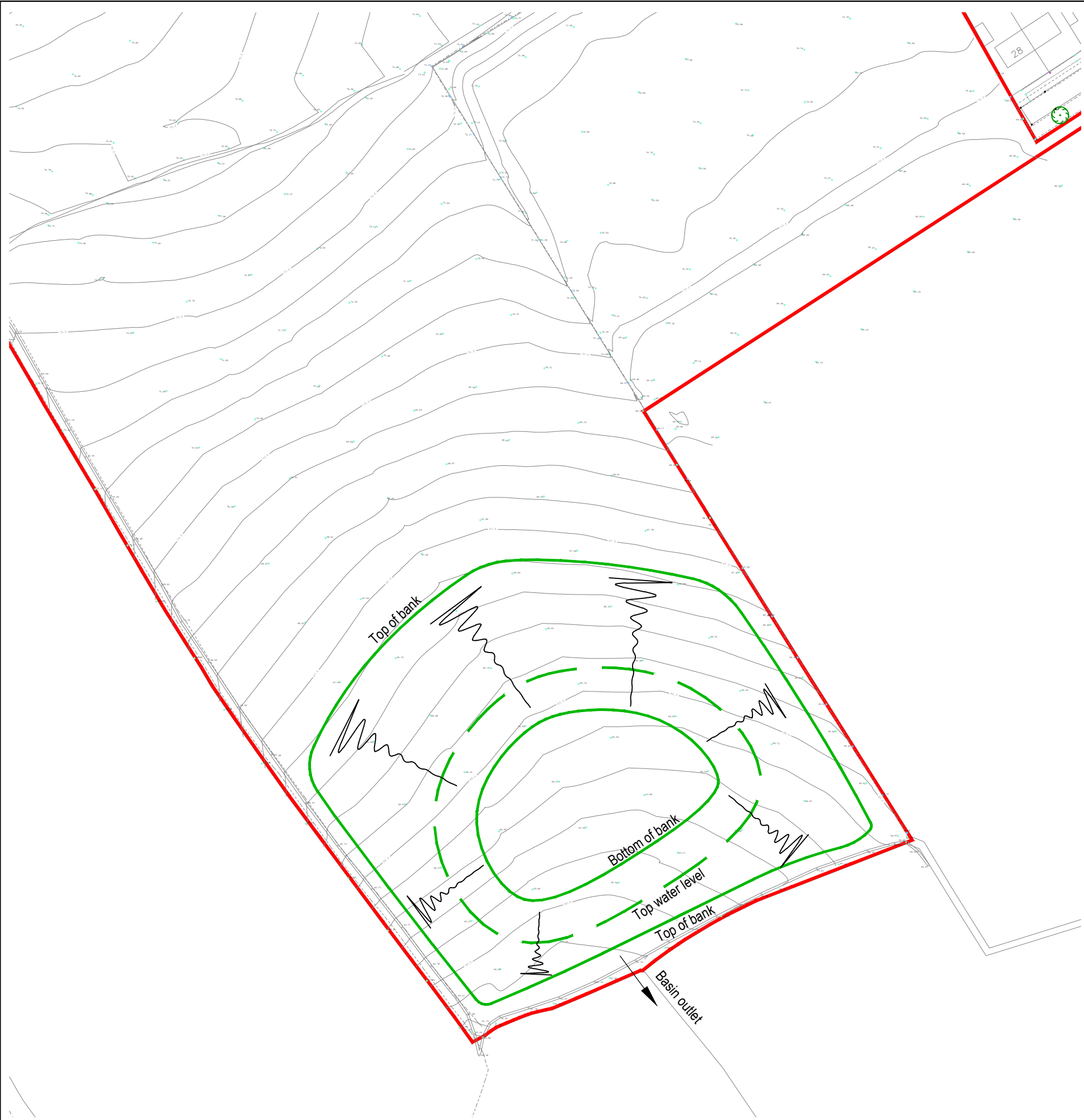
Eastwood & Partners
CONSULTING ENGINEERS **EOP**

St. Andrew's House
23 Kingfield Road
Sheffield S11 9AS

Tel 0114 255 4554
Fax 0114 255 4330

mail@eastwoodandpartners.com
www.eastwoodandpartners.com

SCALE WHEN PLOTTED AT A3 1:2500			DRAWING STATUS INFORMATION	
DRAWN	CHECKED	DATE	DRAWING NUMBER	REV
LEM	RG	14-04-2016	39644/Sk01	A



INFORMATION WITHIN THIS DRAWING IS NOT NECESSARILY PRODUCED TO SCALE.
ALWAYS USE FIGURED DIMENSIONS AND CO-ORDINATES - IF IN DOUBT, ASK.

KEY


—	Site boundary
—	Detention basin

A	First Issue.			
REV	DESCRIPTION	SIG	CHK	DATE

WAKEFIELD METROPOLITAN
BOROUGH COUNCIL

LAND OFF MILTON CRESCENT,
LUPSET

DETENTION BASIN PLAN

Eastwood & Partners 
CONSULTING ENGINEERS

St. Andrew's House
23 Kingfield Road
Sheffield S11 9AS

Tel 0114 255 4554
Fax 0114 255 4330

mail@eastwoodandpartners.com
www.eastwoodandpartners.com

SCALE WHEN PLOTTED AT A3 1:1000		DRAWING STATUS INFORMATION	
------------------------------------	--	--------------------------------------	--

DRAWN LEM	CHECKED RG	DATE 21-04-2016	DRAWING NUMBER 39644/Sk02	REV A
--------------	---------------	--------------------	------------------------------	----------

SuDS Type	SuDS Technique	Description	Suitable	Comments
Source Control	Green roof	Vegetated roof that reduces runoff volume and rate	No	Expected planning requirement for traditional pitched roofs to match neighbouring housing
	Rainwater harvesting/ Water butt	Rainwater is stored and re-used	Yes	Individual storage tank capacity unlikely to meet volume required. Water butts could be used for garden watering.
	Permeable paving	Paving which allows inflow of rainwater into underlying construction/soil	Yes	Suitable for private drives. There is impermeable ground across the entire suit but private permeable paving areas could provide limited infiltration within the underlying construction material.
Infiltration	Soakaway	Pit or trench which stores and disposes of water to the ground	No	Impermeable ground.
	Filter Drain	Trench which conveys and/or disposes of water to the ground.	No	Impermeable ground.
	Infiltration Basin	Shallow basin which stores and disposes of water to the ground	No	Impermeable ground.
Conveyance	Swale	Shallow vegetated depression which conducts and retains water	Yes	Possible use for water treatment within basin adopted by Wakefield MBC. Theoretically adoptable by Yorkshire Water but considered unlikely in practice.
Detention	Subsurface storage	Traditional underground pipes or tank storage, or modular systems	Yes	-
	Detention Basin	Normally dry but may have small permanent water pools at the inlet and outlet. They can function as POS	Yes	-
	Pond	Permanent body of water	No	Technically feasible but there are potential difficulties as these features are not currently adopted by Yorkshire Water. A Wakefield MBC adopted basin will provide much of the water quality benefits of these methods.
	Wetland	Permanent body of shallow water or marsh	No	